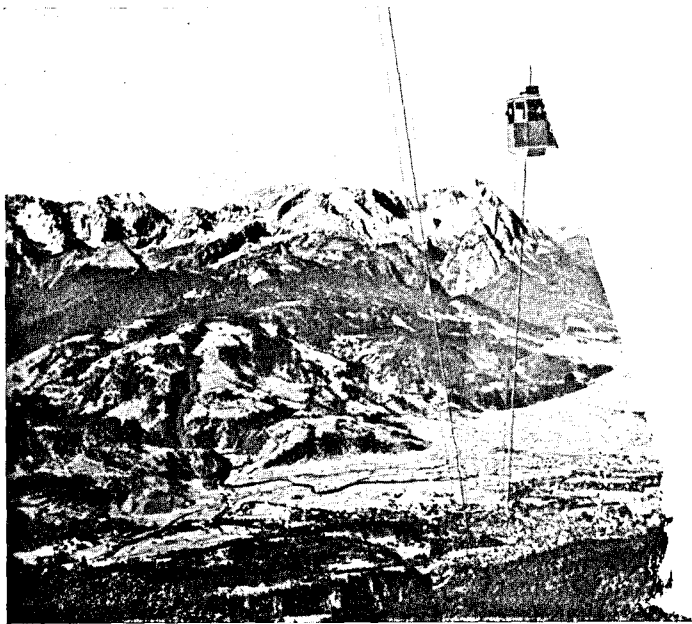
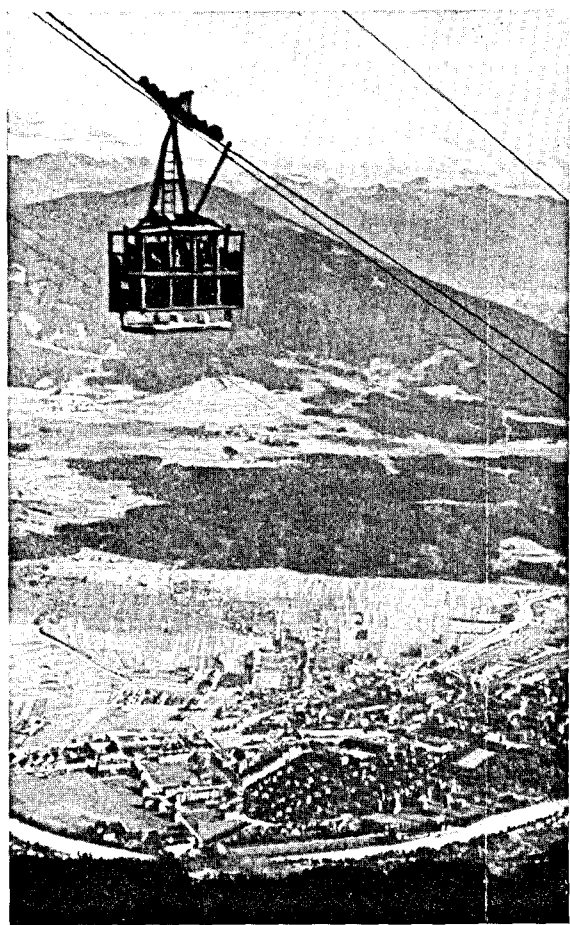


Travelling from Munich in the direction of Kufstein in Tyrol, the tourist should not fail to stop over at Brannenburg for the ascent of the unique Wendelstein, noted as the most beautiful vantage point of that district. The *Wendelstein Railway*, an electric rack railway, is the first mountain railway of Bavaria. The hotel on the summit is much frequented by sufferers from asthma and hay fever and by those who wish to recuperate in the salubrious, undefiled alpine air. The entire journey from Munich to the summit, on which stands a charming little Chapel, takes only 2½ hours. The Hohe Tauern, Grossglockner and Grossenediger, the Tyrolese and the Bavarian and

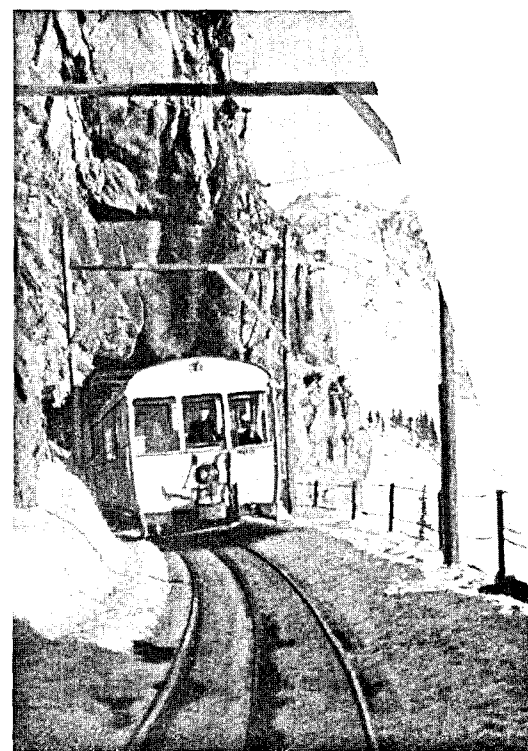


Above:
The Wank Railway at Partenkirchen affords a magnificent view of 400 * alpine peaks and lovely valleys *
Phot. Beckert, Garmisch-Partenkirchen

☆
Left:
A Car of the Nordketten Railway at Innsbruck on the section Seegrube-Summit Station
Phot. Chizzali, Innsbruck

☆
Right:
A Train of the Wendelstein Railway at Brannenburg emerging from a Tunnel. The Railway affords vistas of indescribable beauty

☆
Below:
The higher the car of the Pfänder Railway at Bregenz ascends the mountain, the more wonderful grows the panoramic view of the Lake of Constance and the Alps
Phot. Risch-Laul, Bregenz



Allgäu Alps are included in the panorama enjoyed from the summit.

From Brannenburg it is not far to Innsbruck, the capital of North Tyrol, where two more mountain railways—the *Nordketten (Northern Chain) Railway* and the *Patscherkofel Railway*—open up new alpine wonders to the tourist. From the summit station of the Nordketten Suspension Railway at the Hafele Kar (2,334 m) the most wonderful sunrises may be witnessed. More than 300 peaks, including the Grossglockner, the Brenner region, the Stubai and Oetzal Alps, the Wetterstein Range with the Zugspitze, and the Karwendel Range are visible.

A mountain railway disclosing quite a

(Continued on page 93)

